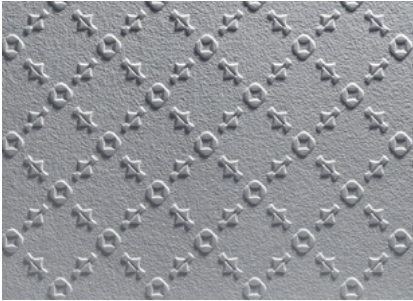


# woodcoat



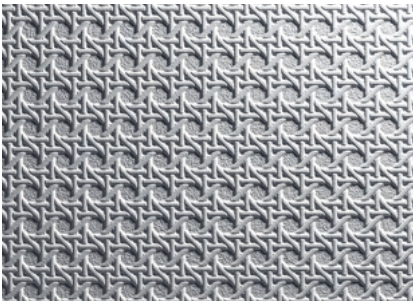
L1 Matrix



L2 Altezza



L3 Linea



L4 Sedia



L5 Forma



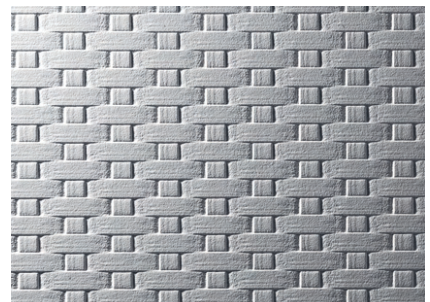
L6 Dedo



L7 Bordado



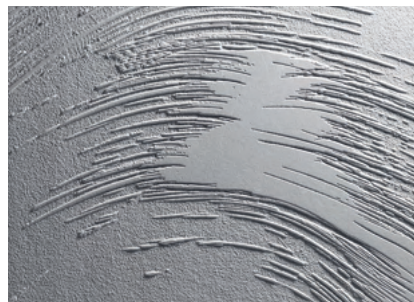
L8 Ramura



L9 Tessuto



L10 Disco



L11 Pavone



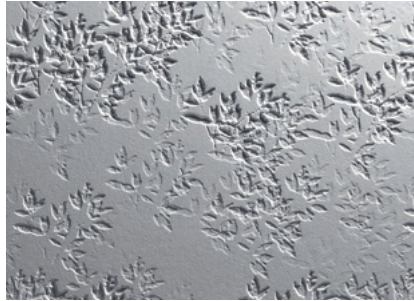
L12 Fiamma



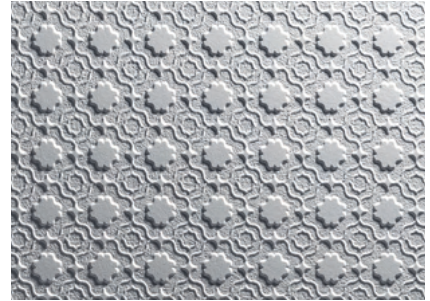
# woodcoat



L13 Trezza



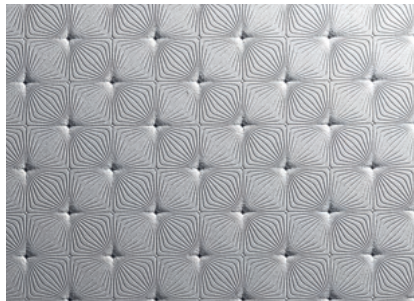
L14 Rama



L15 Fiore



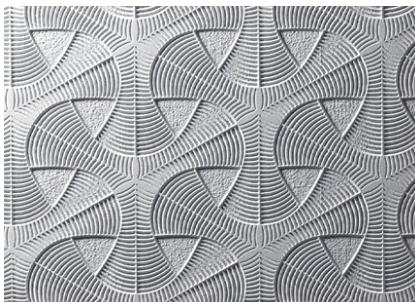
L16 Corso



L17 Polaris



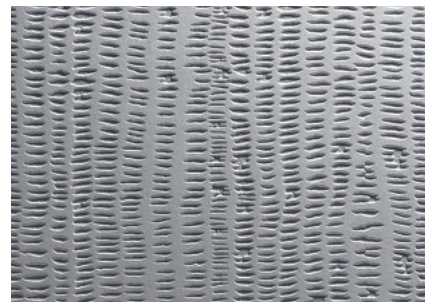
L18 Textura



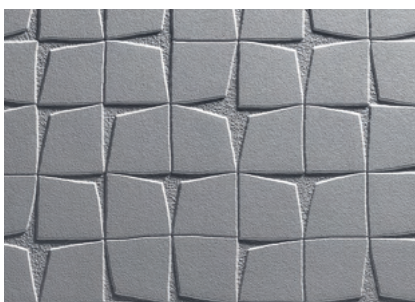
L19 Eterno



L30 Virilo



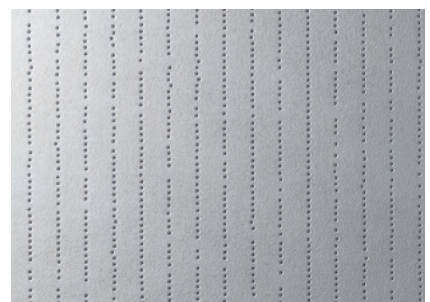
L31 Tacca



L32 Armadelo



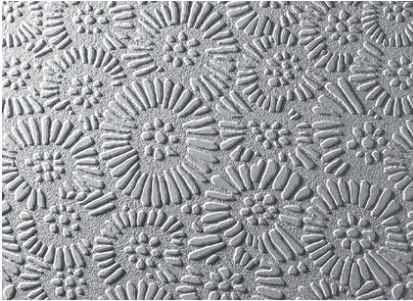
L33 Fluo



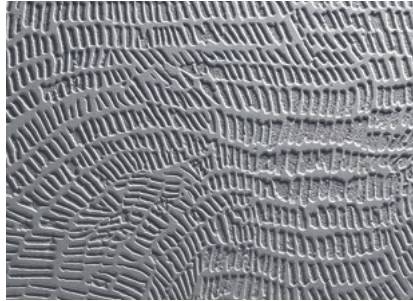
L34 Gota



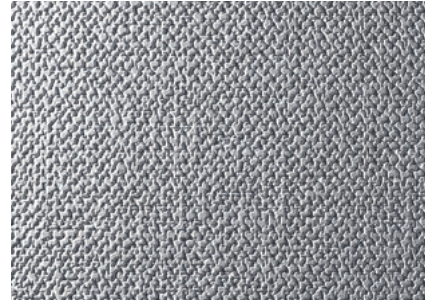
# woodcoat



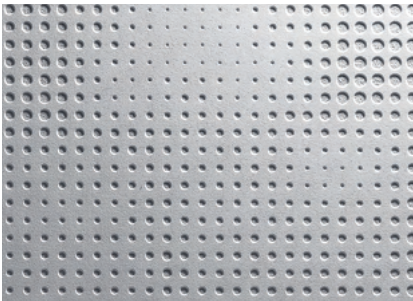
L35 Dandelion



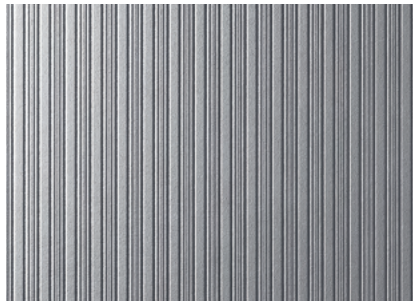
L36 Tribo



L37 Grano



L38 Alba



L39 Campo



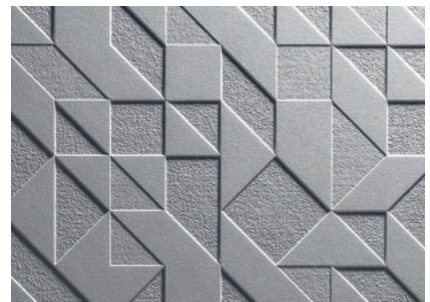
L40 Oido



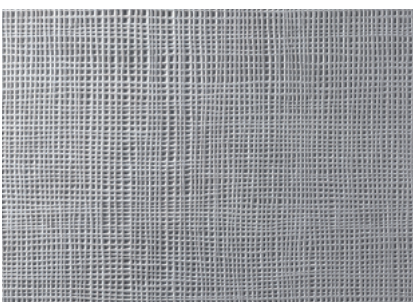
L41 Onda



L42 Koralo



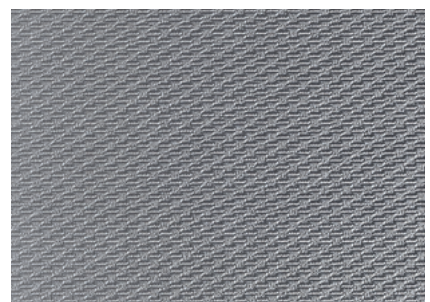
L43 Martello



L44 Nido



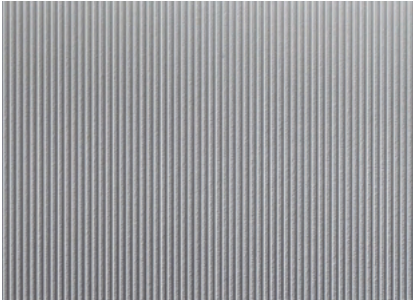
L45 Pala



L46 Cadena



woodcoat



L47 Cortina



L48 Terreno



Woodcoat, die Technologiesparte der Ostschweizer Schreinerei Fust bietet gelaserte 3D-Oberflächen, Pulverbeschichtungen von MDF und massgefertigte Korpusse für B2B-Partner: Online konfiguriert und hochwertig produziert in kurzer Frist.

Pioniere im Pulver-  
beschichten von Holz